

My Information Prescription

Stage in pathway	Information	Given	Sign and date
Follow-up	Stoma care – Ileostomy and Colostomy		
	Diet – what to eat		
	Observation Index		
	Yellow Bag collection		
	Laparoscopic Pre and Post-operative information		
	Water Soluble enema		
	Reversal information		
	Living with a Colostomy - British Colostomy Association		
	Rectal Discharge -British Colostomy Association		
	Staying Healthy after colorectal cancer -Bowel Cancer UK		
	The Guide – an introduction to living with a stoma - ConvaTec		
	What About Sex - Dansac		
	Ileostomy hints and tips - Dansac		
Ileostomy Care at home - Dansac			

NOTES or QUESTIONS

This is an important document – please bring with you to each appointment

My Information Prescription

NOTES or QUESTIONS (continued)

LOCAL INFORMATION CENTRE CONTACT DETAILS

USEFUL NUMBERS:

Cancerbackup – freephone 0808 800 1234
Macmillan Cancer Line – freephone 0808 808 2020

USEFUL WEBSITES:

www.cancerbackup.org.uk
www.macmillan.org.uk
www.information4u.org.uk
www.bowelcanceruk.org.uk
www.beatingbowelcancer.org
www.goingfora.com/
www.colostomyassociation.org.uk
www.corecharity.org.uk
www.lookgoodfeelbetter.co.uk
www.mariecurie.org.uk

March 08 - Version 3

This is an important document – please bring with you to each appointment

My Information Prescription

THIS INFORMATION IS FOR:



The purpose of this Information Prescription is to give you as much information as possible to support you.

First Issued:		By:	
Updated on:		By:	
Updated on:		By:	
Updated on:		By:	

KEY WORKER

Names

Hours available

Contact details

KEY WORKER

Names

Hours available

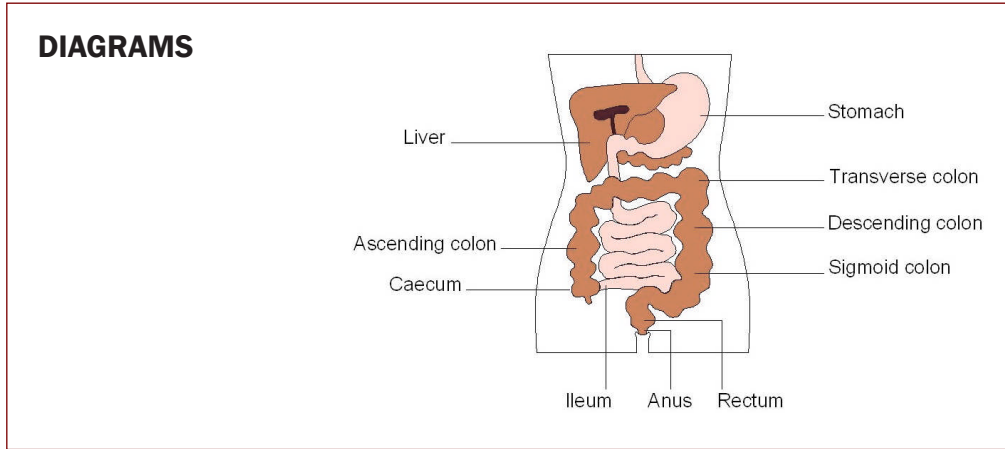
Contact details

CURRENT CONSULTANTS

OUT OF HOURS CONTACT DETAILS

This is an important document – please bring with you to each appointment

DIAGNOSIS

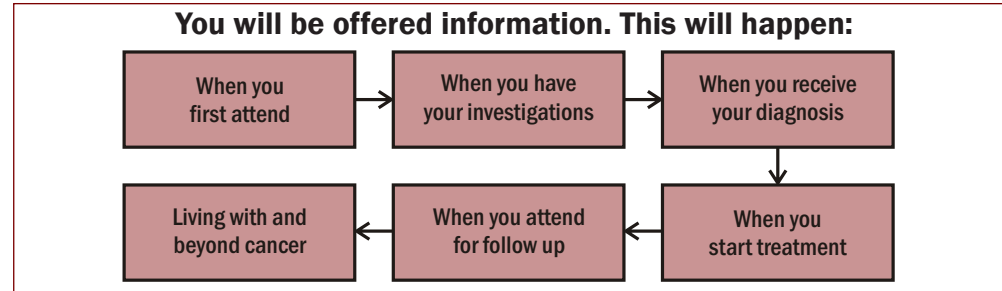


INVESTIGATIONS, TREATMENT AND CARE

Date	What will happen

OTHER MEDICAL CONDITIONS

This is an important document – please bring with you to each appointment



You can get this information at any time by asking your Key Worker or Local Information Centre. Other information that might be important to you and your family could be:

	Given	Sign & Date
Living with cancer		
Day to day practical support		
Insurance <ul style="list-style-type: none"> • Travel • Life • Home 		
Financial Information		
Lifestyle <ul style="list-style-type: none"> • Smoking • Drinking • Exercise • Nutrition and diet 		
Emotional support		
Impact on relationships (sexuality)		
Medications		
Impact of cancer on other medical conditions		
Self help and support groups		
Outlook		

MY MAIN WORRIES AND CONCERNS ARE:

This is an important document – please bring with you to each appointment

Stage in pathway	Information	Given	Sign and date
Consultation and investigation	Investigations (e.g. Endoscopy, Ultrasound, Barium Enema, Bowel Preparation)		
	The Royal College of Radiologists Virtual tour of Hospital Investigation goingfora.com		
	Local Clinic Information		
Diagnosis & Treatment	A-Z of Terminology Bowel Cancer UK		
	Bowel Cancer: the Bottom Line Beating Bowel Cancer		
	Bowel Cancer Surgery: your options Beating Bowel Cancer (Part of the 'Just Diagnosed' pack)		
	Treating Bowel Cancer: your Pathway Beating Bowel Cancer (Part of the 'Just Diagnosed Pack')		
	MDT Leaflet / Key worker Leaflet		
	Staging information CT		
	Staging information MRI		
	Staging information Barium Enema		
	Staging information Colonoscopy		
	Staging information Ultrasound		
	Staging information PET Scan		
	Staging information FOS		
	Staging information Stoma (defunction)		
	Surgical Treatment		
	Chemotherapy		
	Radiotherapy		
Sexual Assessment			
Bladder assessment			

This is an important document – please bring with you to each appointment