

Mid Trent Cancer Network Information Prescriptions – the story so far



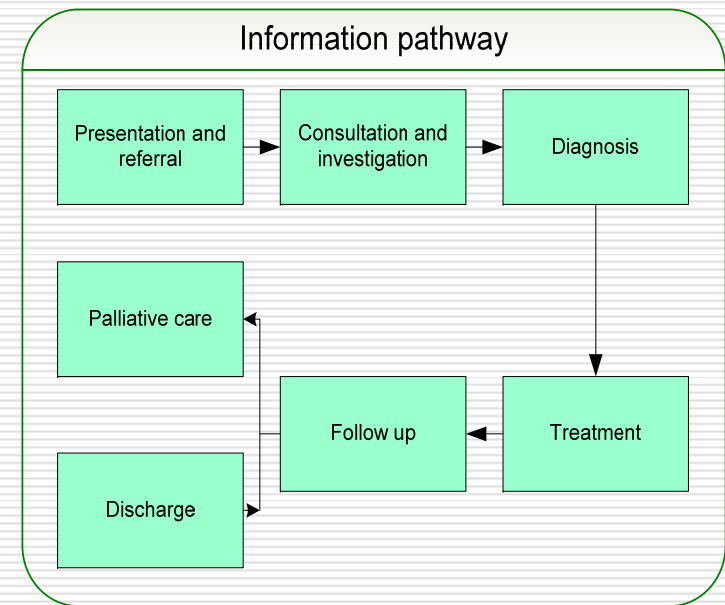
Elaine Wilson – Nurse Director

Sheila Williamson – Project Manager

Which 'conditions' are we focusing on?

- Lung cancers
- Head and neck cancers
- Gynaecological cancers

Each of these 'conditions' has a supporting information Pathway:



How have we approached the pilot and who have we involved?

□ Engagement - a key feature

- Steering group – chaired by a carer and with patient members
- Stakeholder event
 - 10 guiding messages
- Regular meetings with CNS's across all 3 pathways
 - Gaining ownership



How have we approached the pilot and who have we involved?

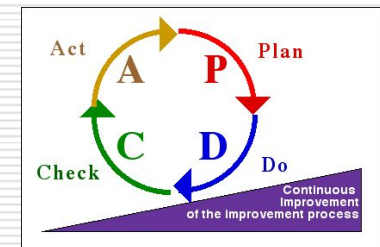
□ Involvement of voluntary sector

- Information centres

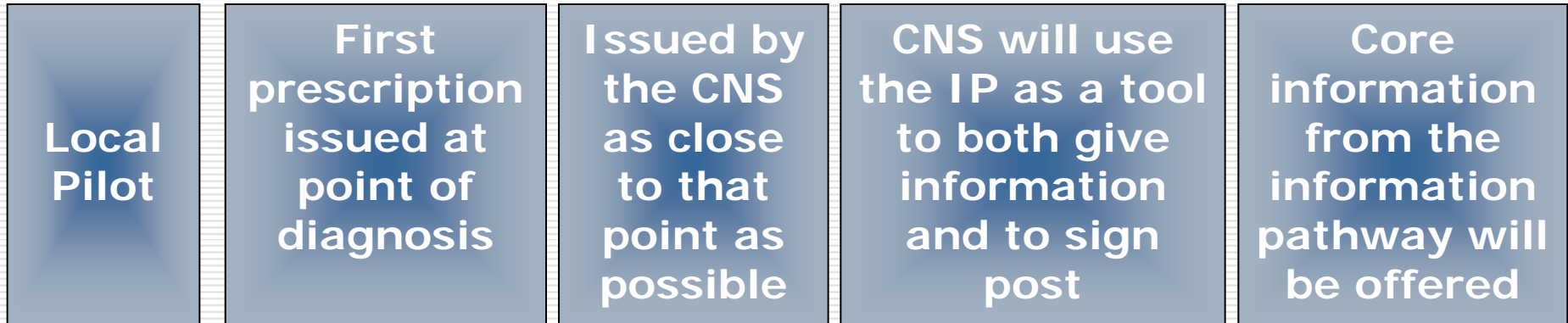


□ Continuous improvement approach

- "Let's have a go!"
- "We won't get it right first time!"
- Small step changes
- What we have now may look different to what we end up with

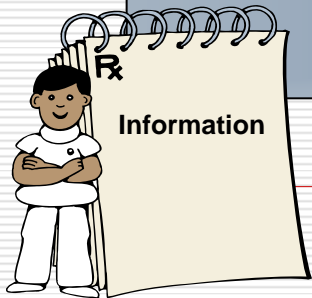


How are we planning to deliver IP's?



The IP will ensure other areas not covered in the core pathway, and that are specific to that person, will also be covered

The IP Template and an operational policy are being developed



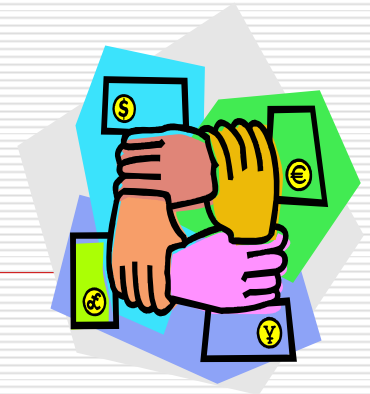
What progress have we made?

- There is clear ownership of project in the Network – within health communities and the clinical teams
- The template and operational policy are being developed and agreed across:
 - 3 health communities
 - 3 clinical pathways
 - 3 Acute Hospital Trusts covering 7 hospital sites



What progress have we made?

- The implementation process for local 'pilot phase' agreed
- Local evaluation process for first phase agreed
- Sign up from Clinical Nurse Specialists to continued development and implementation





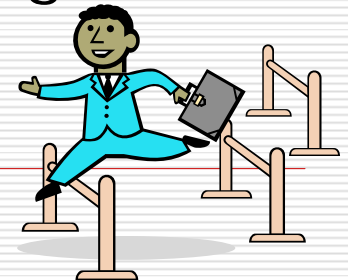
The challenges – at the start of the pilot

- ❑ Not feeling we have to have the answers
- ❑ Giving people time to work out what an IP might be and how it might work
- ❑ Making sure that IPs add value and do not duplicate
- ❑ Finding ways to nurture what is already happening locally rather than replacing it



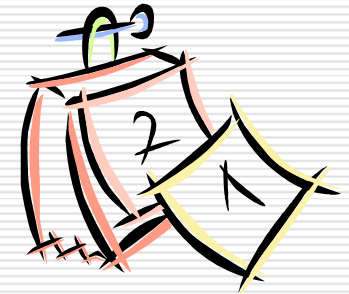
Emerging challenges

- Maintaining the current level of engagement and enthusiasm
- Identifying people who can support us in terms of IT and web design skills
 - Putting in place an IT solution that will link to a number of IT systems
- Engaging with medical staff across all 3 pathways
- Getting the external evaluation process right so that our trusts will sign up to it





Next steps...



- Issuing our first IPs – **June**
- Local evaluation – **July**
- Making any changes or amendments to the template and operational policy – **July**
- CNS's regularly issuing IP's – **August**
- Identify ways of testing the use of IPs jointly between medical staff and CNS's – **September**
- Looking at options for issuing IPs in primary care - **September**

Any thoughts, comments or questions?

